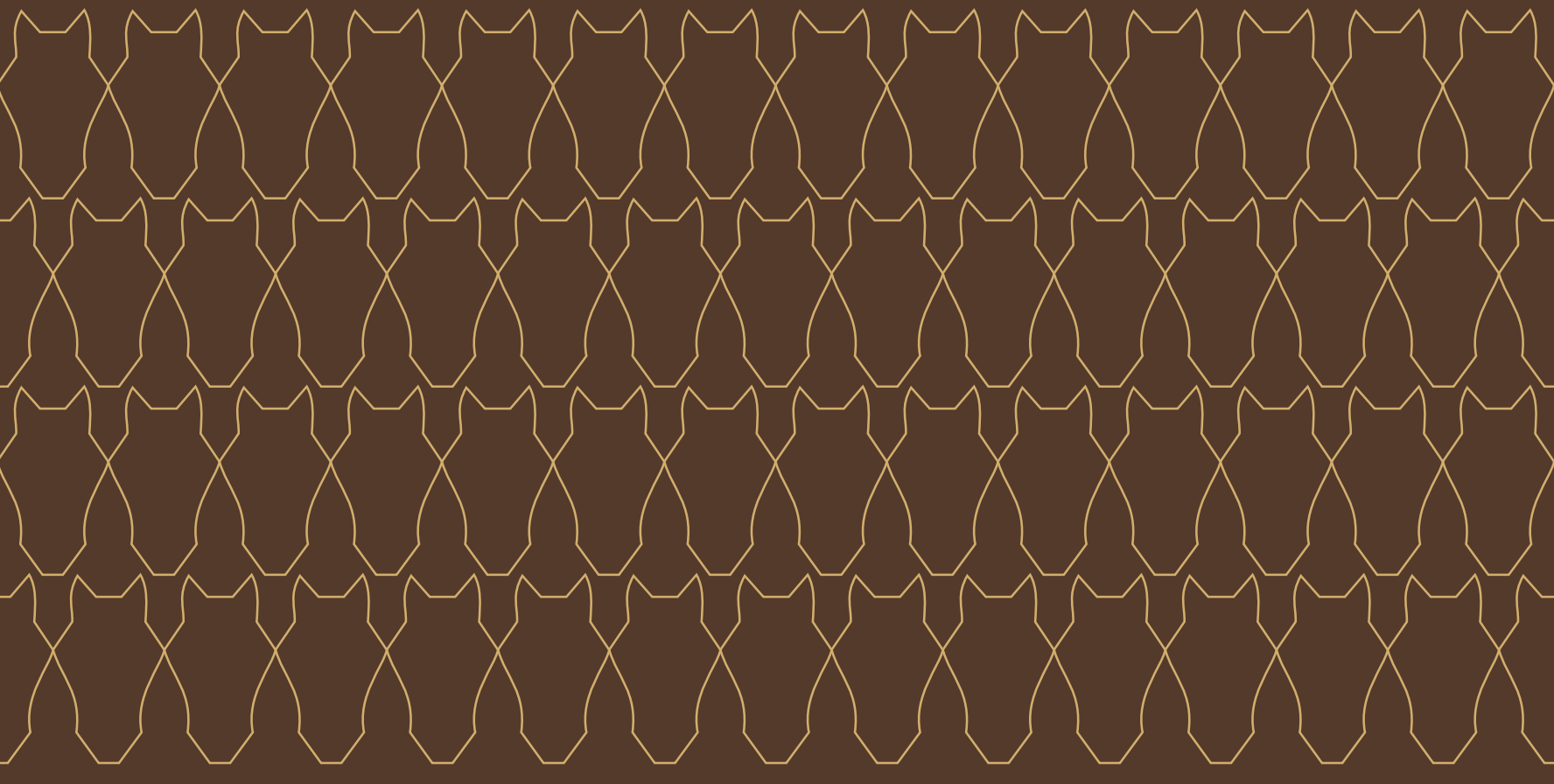


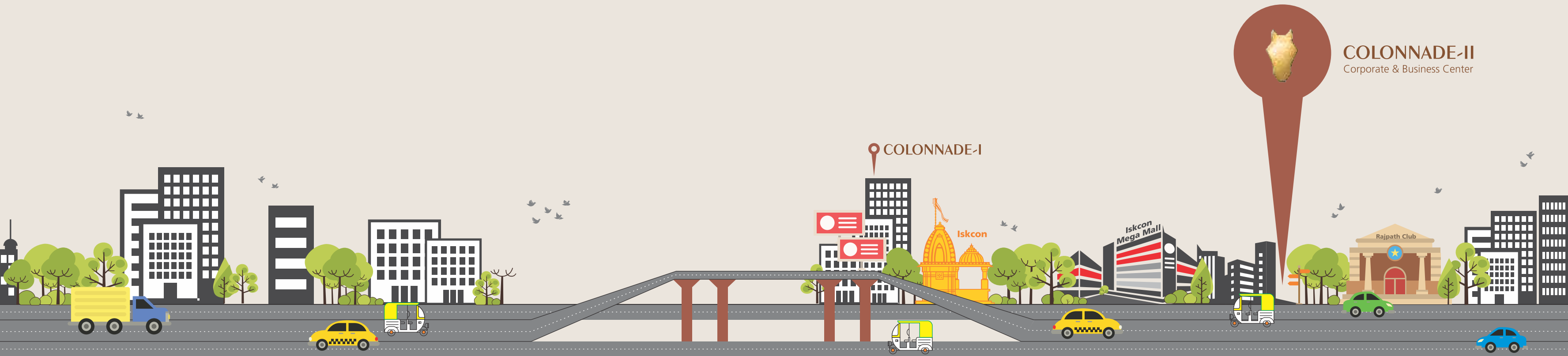


# COLONNADE·II

CORPORATES & BUSINESS CENTER

Raise your stature





23°02'01.1"N 72°30'19.3"E

## RAISE YOUR VISION AND STAY ABOVE ALL

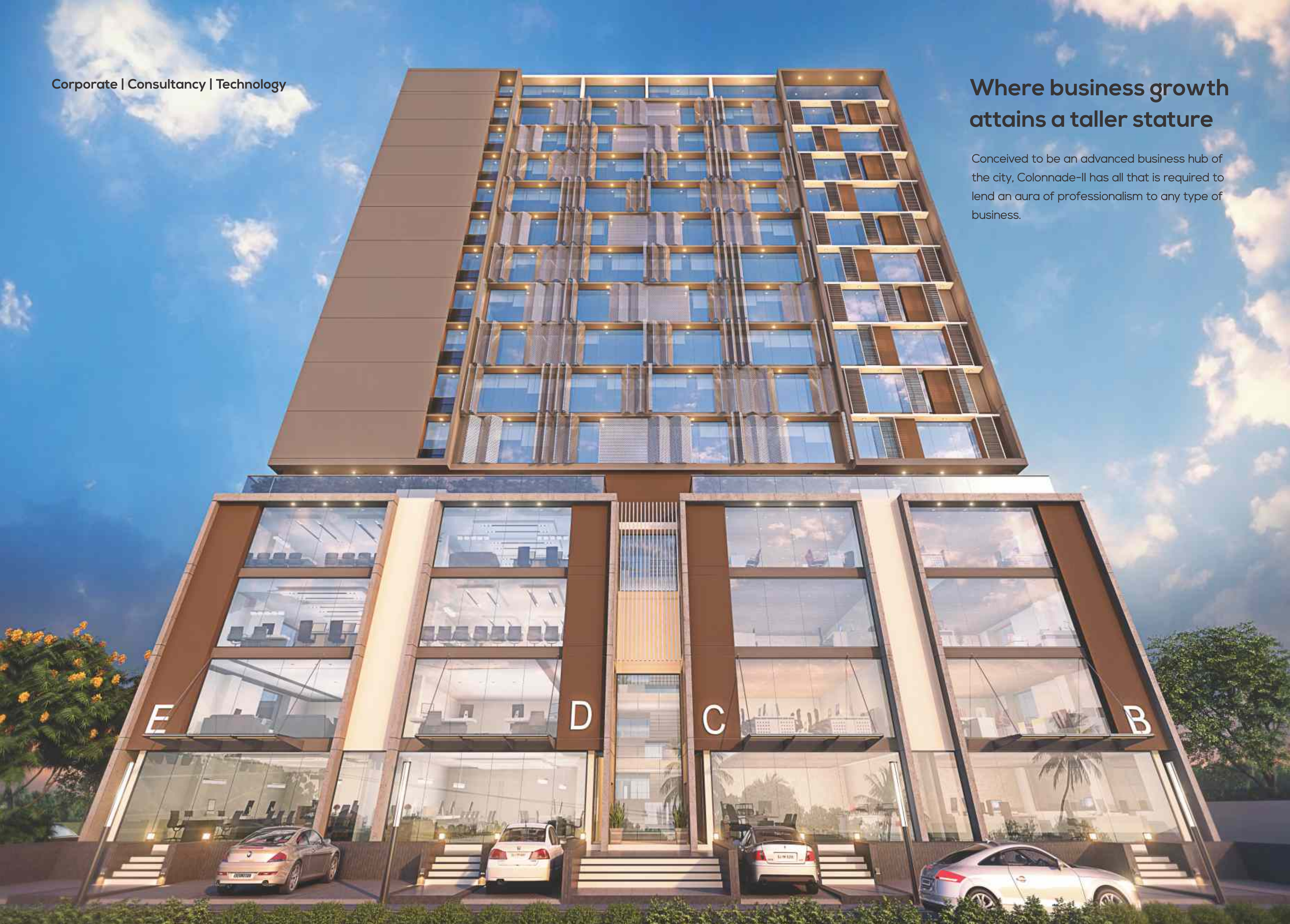
Business is all about identifying opportunities and seizing them at a right time. After resounding success of Colonnade-I, here is a project that is designed to help the visionary business leaders raise their bars, set their eyes on the far-reaching prospects and go beyond the mundane.

Situated in one of most coveted business avenues of the city, Colonnade-II is just behind Rajpath Club, off S. G. Road, ensuring easy connectivity with eminence.

Corporate | Consultancy | Technology

## Where business growth attains a taller stature

Conceived to be an advanced business hub of the city, Colonnade-II has all that is required to lend an aura of professionalism to any type of business.





## Make your presence felt and recognized

Colonnade-II is designed to serve as a full-fledged corporate house for the distinguished ones.



**Where your business's first  
impression reaches  
new heights**

Meet the designs and elevations that match  
your status and help you boost it further.



## **Give your team the distinct environment they deserve**

Be it a startup or an established business, the workforce requires encouraging settings to excel. Give them what they are worthy of.



## Think ahead of times and surge with conviction

Magnificent work environment always helps in boosting the business. Take your business in its next logical orbit and get ready for the quantum leap.



**Achieve prominence in business  
and proclaim your status**

Finance | Art Gallery | Boutique Studio





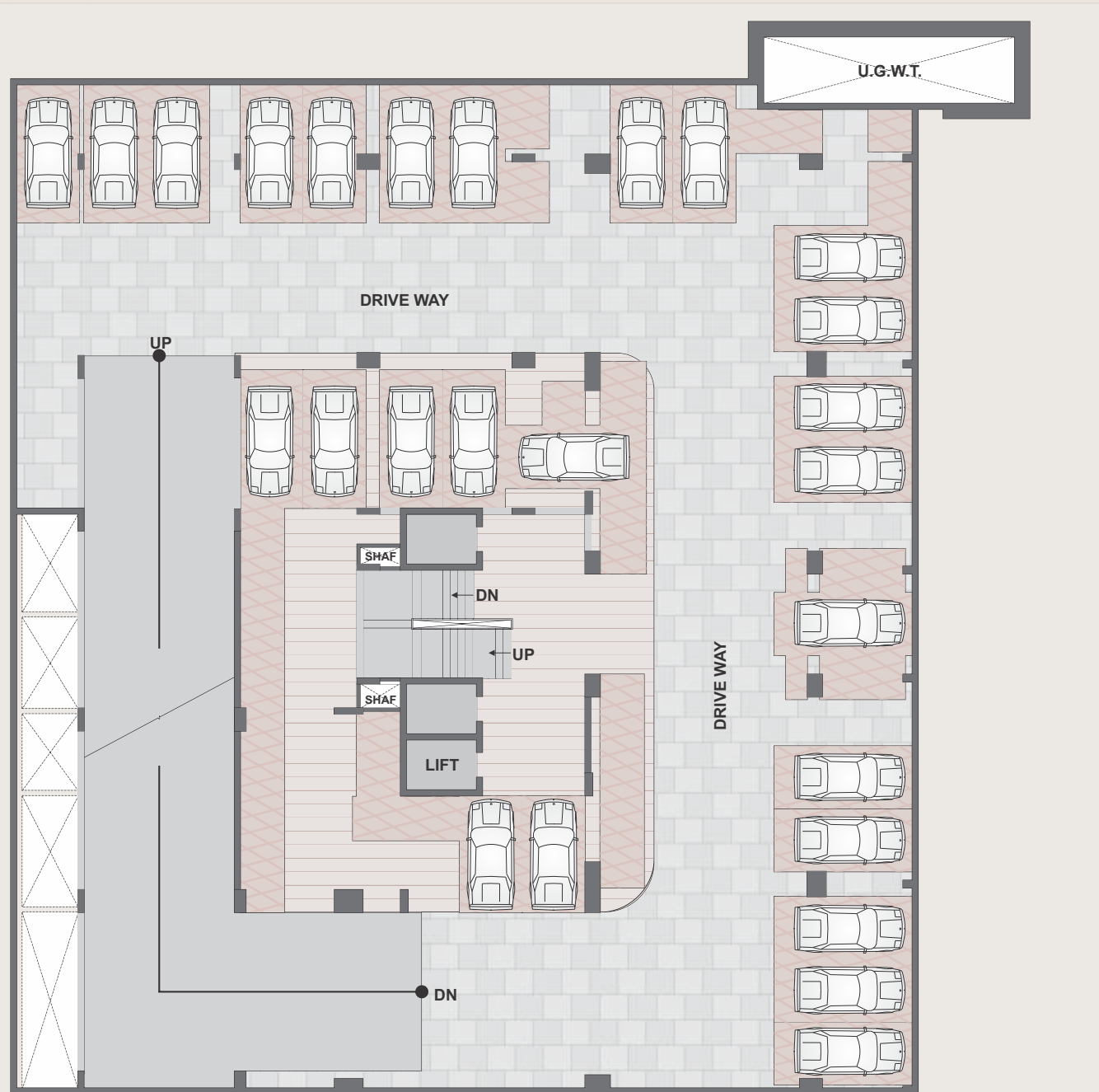
## Sharpen your acumen with outstanding ambience

Here is a project that gives you the class and comfort  
that you require to excel in your business.



# 1<sup>st</sup>, 2<sup>nd</sup>, 3<sup>rd</sup> Basement Plan

(Multi level stack Parking)

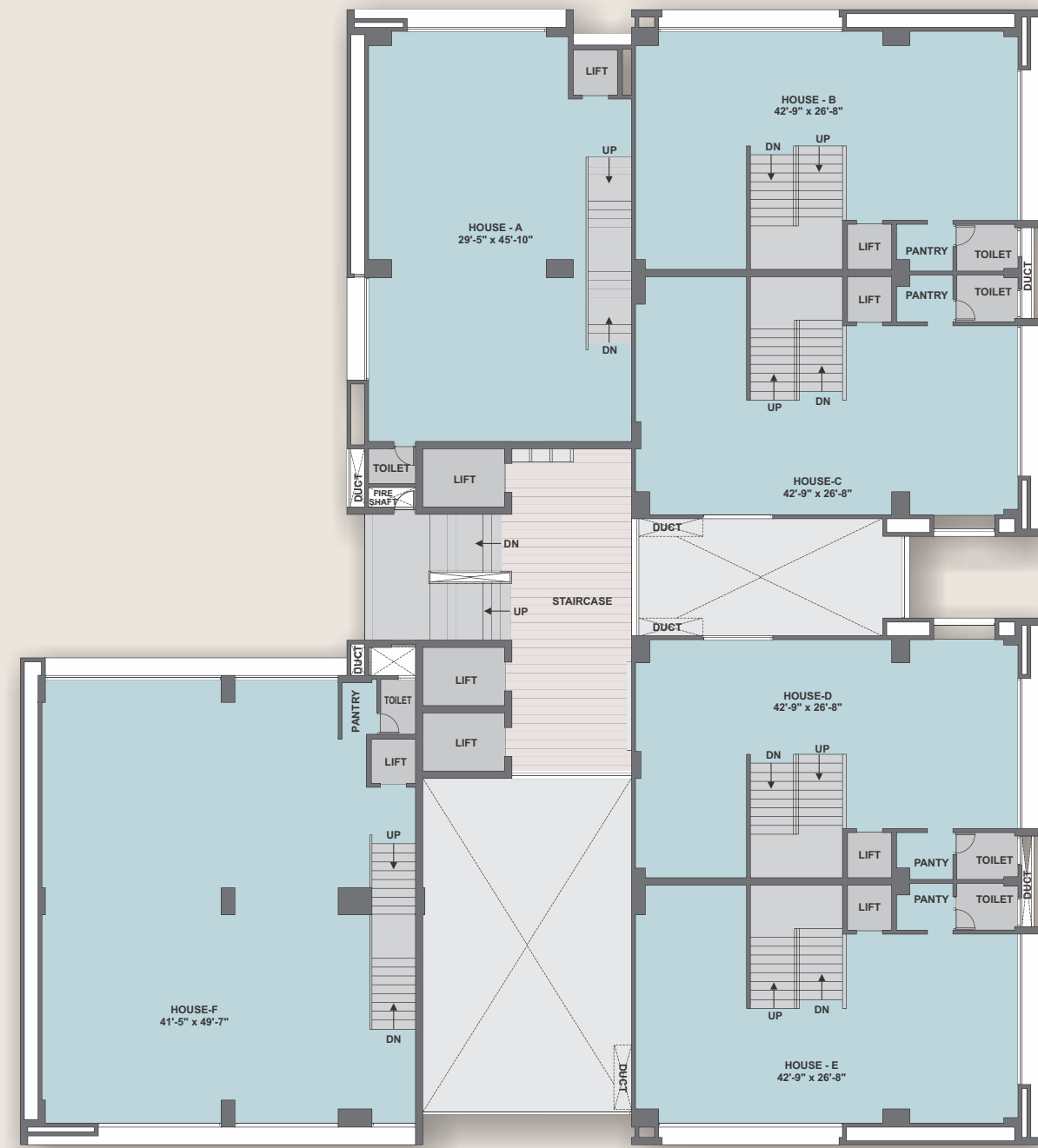


# Ground Floor Plan

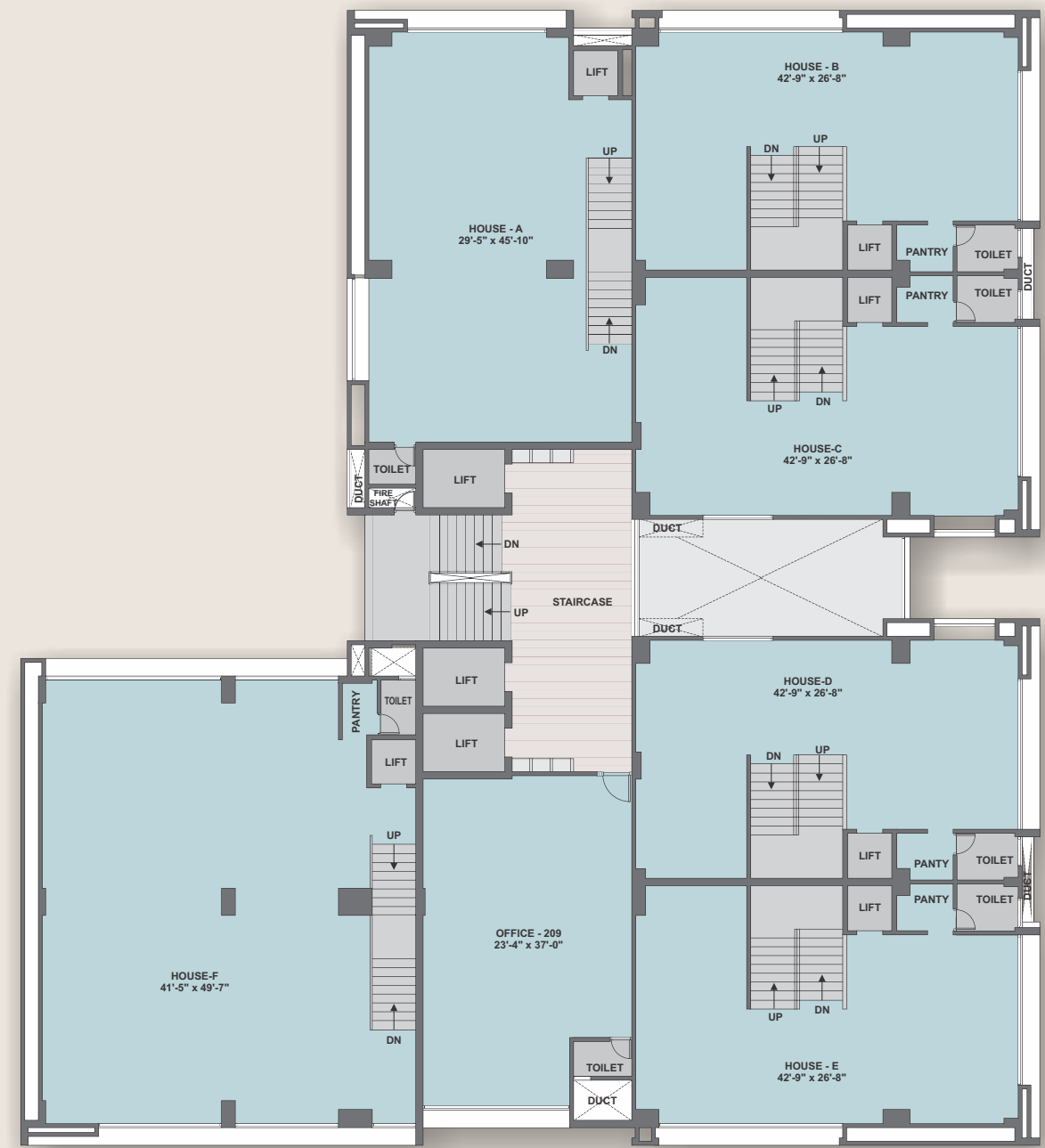




# 1st Floor Plan



# 2nd & 3rd Floor Plan

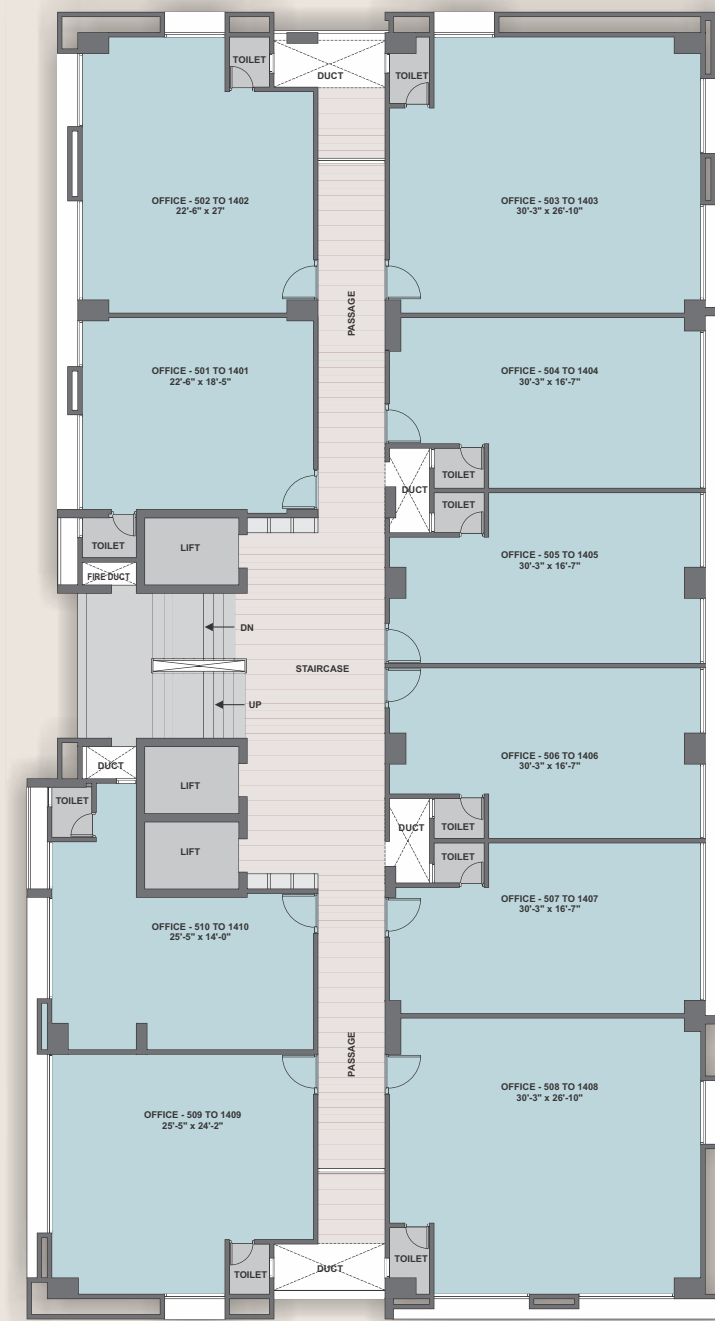




# 4th Floor Plan



# 5th to 14th Floor Plan



## Specifications



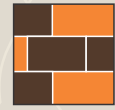
Feel Secured At CCTV Enabled Premise Ensuring Safety & Security.



Get Hassle Free Parking with Triple Basement Stack Parking.



Get Connected To World with Dedicated Wi-fi Zones for Quick References.



Earthquake Resistant RCC Structure



Quality Flooring



High End Elevators



Personal Toilet For Each Office



24 Hrs Water & Electric Supply



Separate Ducts For Electrification & A.C



Generator Backup For Common Utilities



Grand Entry

## Rules & Regulations :

- Stamp duty, registration charges, legal documentation charges, service tax, maintenance deposit and Torrent charges shall be born by member separately.
- Any additional charges of duties levied by government/ local authority during or after the completion of the scheme will be borne by the member.
- Internal changes shall be done with prior permission and shall be charged extra in advance.
- Changes in external elevation shall not be permitted.
- All right reserved by the developer for alteration / modification / improvements in specification and changes in dimensions and planning shall binding to all.
- Polluted business is not allowed in premises.
- Irregular payment may lead to cancellation of booking.
- Any change directed by organizer will be binding to all members.
- This brochure and model are not part of any legal documents.
- All the dimensions / measurements given are unfinished and approximate.
- The photographs & artist impressions are for reference only. Actual property may vary from it.



### Project by :

**AASTHA ENTERPRISE**  
98790 05579

### Site Address:

B/h Rajpath Club, Nr. Maruti Celedron,  
Opp. AUDA Garden, Off. S. G. Road,  
Ahmedabad.

### Proximity:

<b>BRTS</b>	1.0 Km.
<b>ISKCON CROSS ROAD</b>	1.5 Km.
<b>S.G. HIGHWAY</b>	0.5 Km.
<b>RAJPATH CLUB</b>	0.5 Km.
<b>HOTELS</b>	2.0 Km.

